

Zenith



# ZL060116

## Constant Current Discharge Rating Amperes @ 25°C (77°F)

Cut off voltage V/cell	30M	45M	1H	2H	3H	5H	8H	10H	12H	20H	24H
1.75V	217.8	163.3	137.1	74.9	55.4	38.9	26.7	22.1	18.8	12.3	10.3

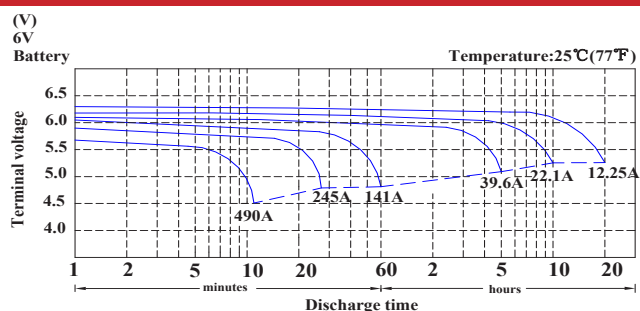
## Characteristics

Capacity 25°C (77°F)	20 hour rate (12.25A to 5.25Volts) 10 hour rate (22.1A to 5.25Volts) 5 hour rate (39.6A to 5.1Volts)	225AH 210AH 190AH
Internal Resistance	Full charged Battery 25°C (77°F)	1.4mΩ
Capacity affected by Temperature (20 hour rate)	40°C (104°F) 25°C (77°F) 0°C (32°F) -15°C (5°F)	102% 100% 85% 65%
Self-Discharge 25°C (77°F)	Capacity after 3 month storage Capacity after 6 month storage Capacity after 12 month storage	91% 82% 64%
Standard Terminal	M8	
Max. Discharge Current 25°C (77°F)	2000A (5s)	
Cranking Performance	Cranking Amps (30-sec amps to 7.2V @ 0°C (32°F)) Cold Cranking Amps (30-sec amps to 7.2V @ -18°C (0°F))	
Reserve Capacity (Minutes to 10.5V at 27°C (80°F))	@ 25Amps @ 75Amps	457Min 120Min
Charging (Constant Voltage)	Cycle Initial Charging Current 45A Or Small 7.25V~7.45V/ 25°C (77°F) Float 6.8V~6.9V/ 25°C (77°F)	

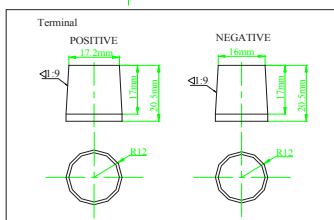
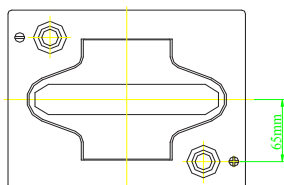
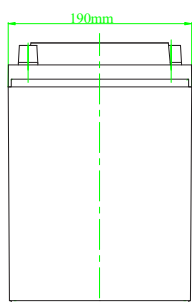
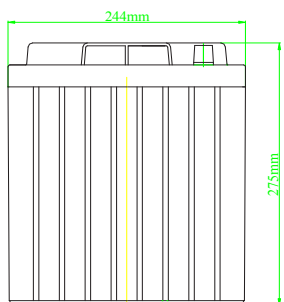
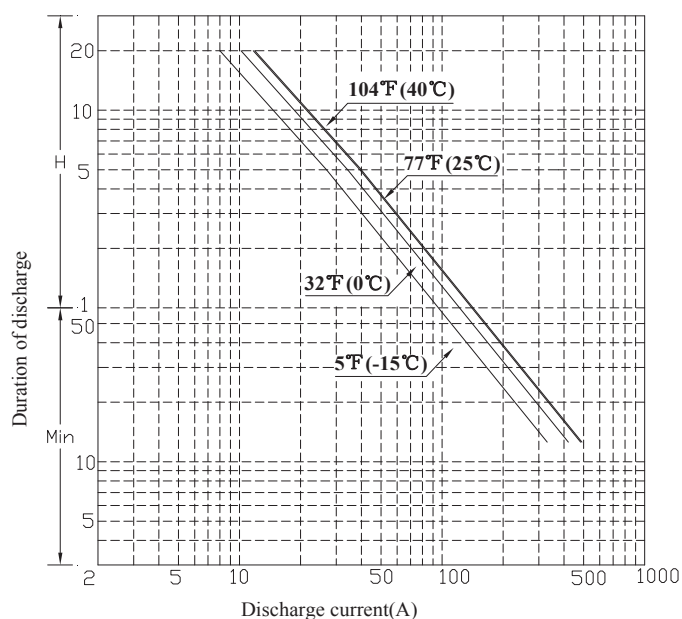
## Specifications

Nominal Voltage	6V	
Rated Capacity (20 hour rate)	225Ah	
Dimension	Total Height (with terminals)	275mm (10.83 inches)
	Height	275mm (10.83 inches)
	Length	244mm (9.61 inches)
	Width	190mm (7.48 inches)
Weight	Approx. 32.3 kg (71.07 lbs)	

## Discharge characteristics 25°C (77°F)



## Duration of discharge vs. Discharge current



This information is generally descriptive only and is not intended to make or imply any representation, guarantee or warranty with respect to any cells and batteries. Cell and battery designs/specification are subject to modification without notice. Contact U.B.S. UNION BATTERY SERVICE for the latest information.

DIVISION OF



[www.zenithdcbattery.com](http://www.zenithdcbattery.com)