



ELECTRONIC MELODY

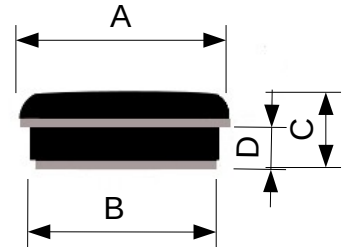


# MCT20



Tweeter Ø bobina 20mm - 4Ω  
Soft Dome in Poliammide  
Magnete in neodimio

## Dimensioni



A	36	mm
B	33	mm
C	20	mm
D	8	mm

Potenza Max	100	W	Qms	
Potenza RMS	50	W	Qes	
Ø Foro Pannello	33	mm	Qts	
Sensibilità (1W/1m)	89	dB	Mms	g
Impedenza Nominale	4	Ω	Cms	mm/N
Ø Bobina Mobile	20	mm	Vas	l
D		mm	Bxl	Wb/m
Re	3	Ω	L1K	mH
Fs	1500	Hz	L10K	mH

## MCT20

