

FUSION®

Printing a Mounting Template

NOTICE

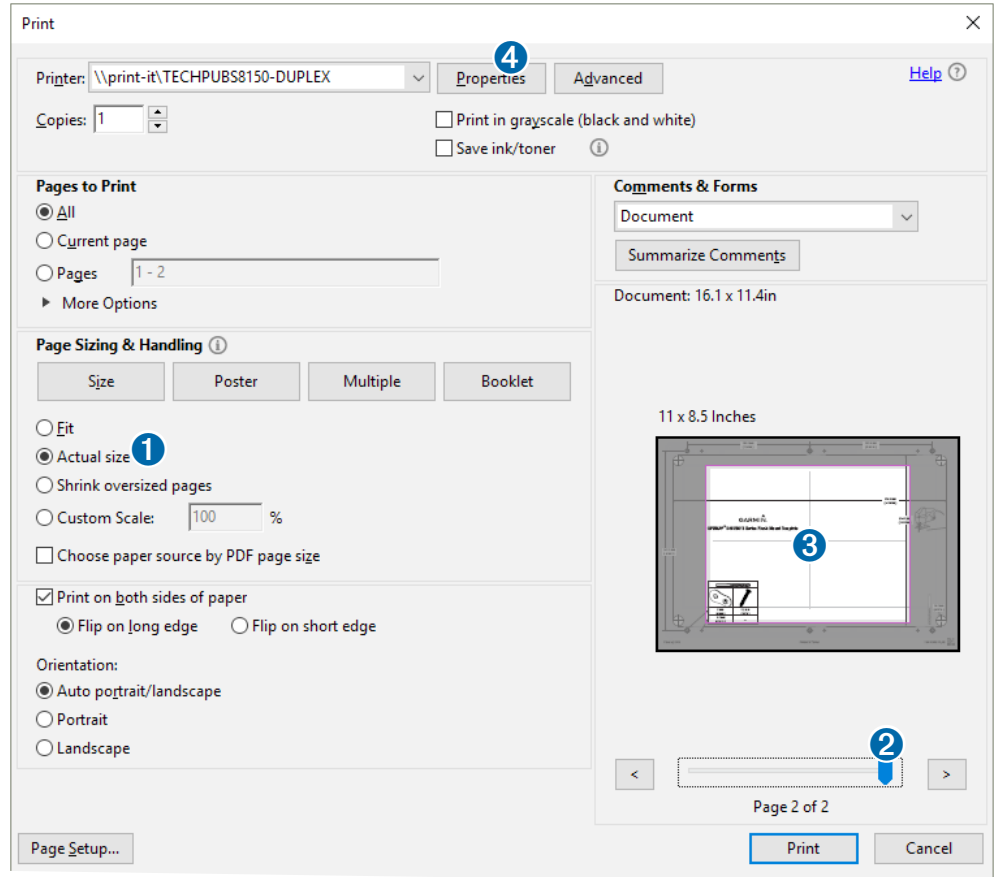
It is not recommended that you print a mounting template on your own. Use the template that came in the product box.

If you do print the template, you must follow these instructions for printing a mounting template precisely. To print large templates, you need large enough paper and printer. Failure to have the correct sized paper and printer, or a failure to follow these instructions, may result in an incorrectly sized template and therefore an incorrect cutout (too large or too small) on the mounting surface of your boat.

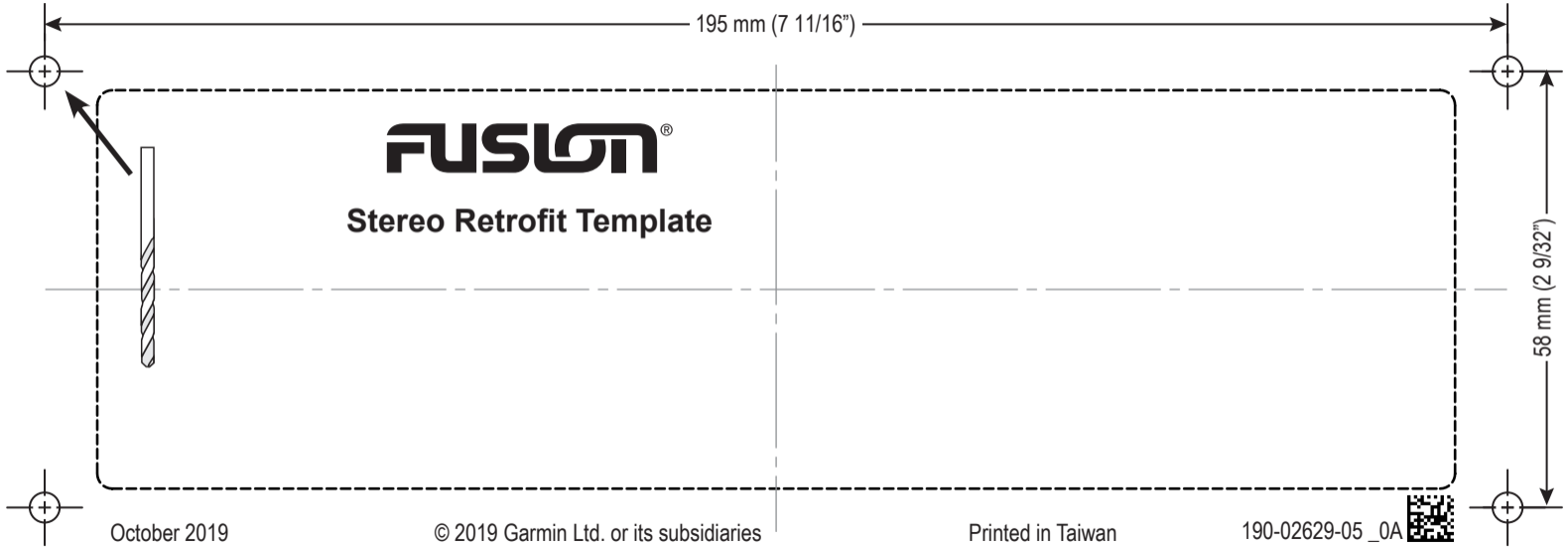
- 1 Select **File > Print**.
- 2 Select **Actual Size 1** for **Page Sizing & Handling**.
- 3 Drag the arrow 2 to the right, to view page 2 in the window below.
- 4 Verify that the paper size is larger than the template 3.
In this example, the paper is not larger than the template.
- 5 If the paper size is not large enough, select **Properties 4** and select a **Paper Size** that is larger than the template.

NOTICE

Garmin is not responsible for any damages or expenses resulting from a miscut mounting surface arising from a failure to follow these instructions.



195 mm (7 11/16")



FUSION[®]

Stereo Retrofit Template

58 mm (2 9/32")

October 2019

© 2019 Garmin Ltd. or its subsidiaries

Printed in Taiwan

190-02629-05_0A

